

VALUE THAT WORKS

GROUP PRODUCTS



Shantui Social

SHANTUI CONSTRUCTION MACHINERY CO., LTD.
ADD: No. 58, G327 Highway, Jining City, Shandong, CHINA
TEL: +86-537-2909369
FAX: +86-537-2311219
EMAIL: trade@shantui.com
WEB: www.shantui.com

SHANTUI



Engine Model: YANMAR 3TNV80F
Gross Power: 14.6kW/2400rpm
Operating Weight: 2780kg/2880kg

High Performance in a Compact Design

WALK-AROUND

SHANTUI

LED LIGHT



CANOPY OPTIONAL



ENGINE



- Equipped with Japan Yanmar engine, meeting emission standards for Euro V, North America EPA Tier 4, and national IV non-road mobile machinery, which is energy saving and environmental protection with strong power. The load sensing system ensures fast response, superior control and high efficiency.

BOOM EXPLOSION-PROOF VALVE

AUXILIARY PIPING

- The excavator standard comes with one set of auxiliary pipelines, and can also be equipped with a second set of auxiliary pipelines as optional to meet the requirements of various attachments.

TELESCOPIC TRACK



- The travel motor has an automatic speed control function, so the travel efficiency is higher.



HIGH PERFORMANCE IN TIGHT CONDITIONS

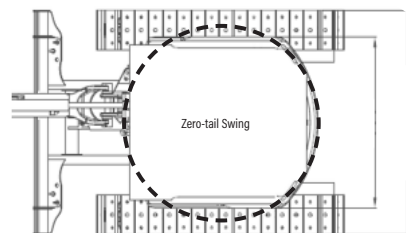
A COMPACT MODEL WITH HIGH PERFORMANCE

SE26SR with OPG/TOPS canopy (cab) provides excellent visibility, stability, optimal comfort, and safety. For tough jobs in tight corners that demand precision control and state-of-the-art performance.

SE26SR is ready to work, offering following advanced features: Zero-tail swing, boom swing. Featuring high reliability, low operating cost, and superior efficiency, and you've got the ideal mini for a wide range of modern jobs.

Zero-tail Swing

With zero-tail swing, even the tightest space becomes an efficient work place. The tail always stays within the width of the tracks (when extended) and lets you turn the canopy throughout its 360-degree turning radius with complete confidence and safety. Starting point by developing our zero-tail SE26SR/SE27SR, balance, fast and smooth operation was our main target. It results in a compact excavator with excellent balance and comes to its full potential in urban environments, landscaping, and small demolition in and outside buildings.



Boom Swing

The left and right boom swing angle supports complex operating conditions like parallel wall digging or working in narrow spaces.

Auxiliary piping

Auxiliary piping is standard. A second set of auxiliary piping is also available as an option. It can meet the configuration of various attachments.

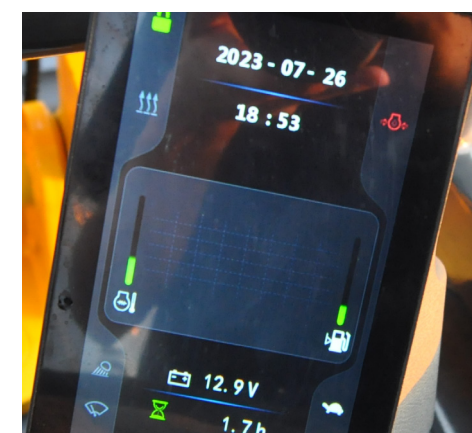


OPERATIONAL COMFORT



LARGE OPERATOR ENVIRONMENT WITH ERGONOMIC CONTROL LAYOUT

The SE26SR/SE27SR provides an uncompromised operator environment – which, together with excellent visibility, provides unmatched operator comfort and safety. This machine is built around the operator – providing optimal ergonomics for operators of all sizes. SE27SR is equipped with cab with large space, wide view, reasonable arrangement of manipulation devices, convenient and comfortable operation.



The 7-inch intelligent touch screen is used to integrate rich functions. And fuller and more intelligent human-computer interaction is also realized to enhance the operating experience.



Emergency brake button



Dual proportional joystick.

EASY ACCESS FOR MAINTENANCE

EASY SERVICE ACCESS

SE26SR/SE27SR is developed with taking particular attention to ease of service access. With a single access point for the daily maintenance of all main components, fuel level gauge and refuelling through the lockable cap.



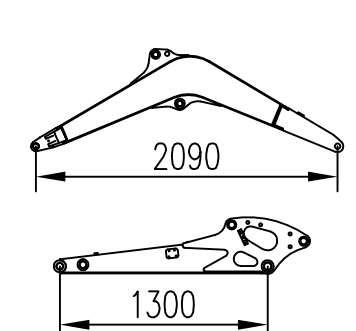
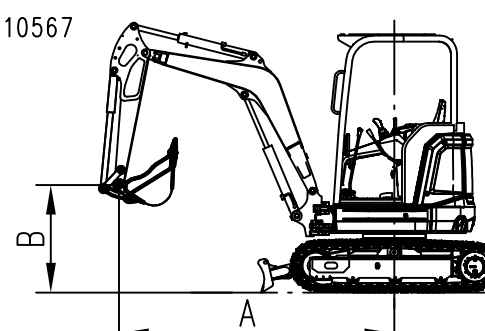
EASY MAINTENANCE

- Fuel filter
- Water seperator
- Air filter
- Engine oil fiter
- Engine oil level check
- Coolant
- Start motor
- DC generator
- Battery
- Main switch
- Radiator & Oil cooler

The SE26SR/SE27SR is designed for lower maintenance cost with longer service intervals- resulting in more machine availability on-site. Meanwhile, skilled SHANTUI-trained technicians are available to provide extra support when needed.

LIFTING CAPACITY FORM

ISO 10567



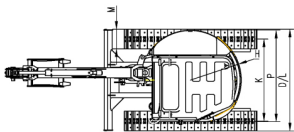
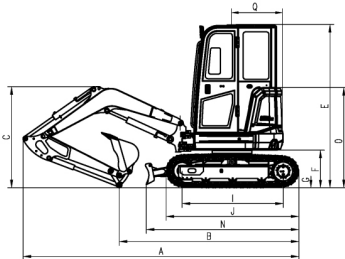
LIFT CAPACITY	RATED LIFT CAPACITY OVER BLADE,BLADE DOWN-kg			RATED LIFT CAPACITY OVER BLADE,BLADE UP-kg			RATED LIFT CAPACITY OVER SIDE,BLADE UP-kg		
<div>Amm Bmm</div>	2000	3000	At Max.Radius@(mm)	2000	3000	At Max.Radius@(mm)	2000	3000	At Max.Radius@(mm)
3000	-	-	493*@(2663)	-	-	363@(2663)	-	-	371@(2663)
2000	538*	445	391@(3188)	527*	278	239@(3188)	538*	284	244@(3188)
1000	787*	433	346@(3347)	592	266	206@(3347)	605	272	211@(3347)
0	898	421	374@(3197)	557	255	224@(3197)	569	261	229@(3197)
-1000	863*	-	521@(2685)	554	-	322@(2685)	564	-	329@(2685)

NOTICE:
1.Please refer to the Operator's Manual for other details.
2.According to ISO10567,the rated load is 75% of the effective static tipping load,or 87%(*)of the rated hydraulic lifting load (the standard value is the smaller one).It's able to turn 360 degrees and work on the Flat ground,
3.Lift capacity stays with ±5% for all available track shoes.

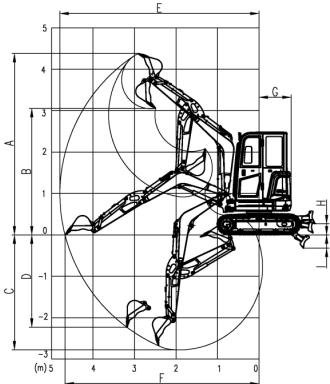
SPECIFICATIONS

ENGINE	
Model	3TNV80F
Type	3 cylinders, direct injection
No. of cylinder	3
Emission	EPA Tier 4 Final/Europe Stage V
Displacement	1.267L
Power output	14.6kW/2400rpm
HYDRAULIC SYSTEM	
Type	Variable plunger pump
Operating flow	86.4L/min
Operating pressure	24.5MPa
DIGGING FORCE (ISO6015)	
Bucket digging force	24kN
Arm digging force	14.8kN
BUCKET	
Type	Backhoe bucket
Bucket capacity	0.065 m³
Bucket width	460 mm
TRAVEL SYSTEM	
Type	Plunger motor
Track roller	2×3
Track shoes	2×42
Carrier roller qty	1x2
Travel speed	2.3/4.0km/h
Max. Drawbar pull	29kN
Grade ability	≤30°
SWING SYSTEM	
Swing motor type	Plunger motor
Swing pressure	23MPa
Swing speed	0-10r/min
Brake type	Pressure release mechanical braking
REFILLING CAPACITIES & LUBRICATIONS	
Fuel tank	33L
Cooling system	5L
Engine oil	3.4L
Hydraulic oil tank	22L
System Capacity	32L
OPERATING WEIGHT AND GROUND PRESSURE	
Shoe width	300mm
Ground pressure	26.3kPa/27.3kPa
Operating weight	2780kg/2880kg

DIMENSIONS (BOOM: 2090 mm ARM: 1300 mm)		mm
A	Overall length	4200
B	Ground contact length (Transportation)	2735
C	Overall height(to top of boom)	1540
D	Overall width	1550
E	Overall height(to top of cab)	2480
F	Counter weight ground clearance	575
G	Ground clearance	300
H	Tail swing radius	775
I	Crawler wheel base	1540
J	Track length	2020
K	Track gauge	1250
L	Track width	1550
M	Shoe width	300
O	Bonnet height	1530
P	Revolving frame width	1400
Q	Distance from swivel center to tail	775



WORKING RANGE		mm
A	Max. digging height	4390
B	Max. dumping height	3060
C	Max. digging depth	2800
D	Max. vertical digging depth	2310
E	Max. digging radius	4800
F	Max. digging radius at ground level	4680
G	Tail Swing radius	775
H	Maximum Dozer Lift Height	300
I	Maximum Dozer Dig Depth	320



* The specifications are subject to change without notice. The pictures may include options. The actual color & appearance of the product may differ from what is shown.